



(above): Early Morning Thunder (Lee Walker 2007) Spuria
photo: Comanche Iris

Sydney B. Mitchell Iris Society

Saturday,
January 19th, 2019
11:00 am - 3:30 pm
**Yearly Potluck and
Judges' Training**
~ Anna Cadd will present a
judges' training on spuria iris
At the Sailboat House



Schedule for January 19 potluck at the Sailboat House:

10:30 a.m.: Setup

11:00 a.m.: Doors open

12:00 p.m. Lunch begins

1:30 p.m.: Judges' training on spurias by Anna Cadd (1.5 hours)

3:30 p.m.: Event ends

The Sailboat House is at

~ 568 Bellevue Avenue, further around than the Garden Center ~

Meetings are free & open to the public.



The SBMIS winter potluck will be on Saturday, January 19th at the Sailboat House.

Doors open at 11:00 a.m.

(If you want to help with setting up tables you can arrive as early at 10:30 a.m.)

Please bring a dish to share if you can. SBMIS will provide a ham, rolls, and hot beverages.

Bring something for our **Silent Auction**, if you can!

You are welcome to attend the trainings even if you are not a judge.

President's Message

Happy 2019! I hope you'll be able to join us for our January potluck on the 19th at the **Lake Merritt Sailboat House**. Anna Cadd will present a judges' training on spuria iris.

We will also have a ***silent auction*** - if you have plants or iris-related items you'd like to contribute, please let me know.

2019 is shaping up to be a very busy year, as in addition to our regular activities the **AIS National Convention** will be held in the bay area April 23-27. There are lots of ways to contribute to this major effort - a few possible ways to help include helping with local tour gardens, staffing the registration table, assisting with assembling contents of convention bags, and many other jobs, big and small. Shirley Trio is the convention chair and your contact for all volunteer opportunities.

Thanks, Jean

2019 Sydney B. Mitchell Iris Society Calendar ~ All meetings are at the Garden Center, **except for January potluck, July sidewalk sale and September potluck.**
<http://bayareairis.org/calendar.html>

January 19, 2019 -- Potluck and Judges' Training ~

All Region 14 members and friends are welcome to attend; this is always a fun event.

*You are invited to bring items of historic interest, memorabilia, or photos about irises or irisarians -- there will be a display table to share these items.

Please bring your contributions for the potluck luncheon to the kitchen (stove & refrigerator are available).

Please bring your own plates, silverware and cup.

The society will provide napkins, hot drinks, rolls, and a ham.

Local Sydney B. members will bring warm dishes.

More distant members & guests, please bring appetizers, salads, desserts, or other beverages.

Your dish should be suitable for at least 10 people, if possible -- but bring what you can!

Expect to pay \$5.00 at the toll booth.

February 22: meeting	July 26: bearded auction and sale
March 22: meeting	July 28: rhizome sidewalk sale
April 19-21: show	August 23: meeting
May 24: meeting	September: barbecue / potluck
June 28: meeting	October 25: beardless auction and sale

American Iris Society (AIS) Dues can be mailed

to Tom Gormley - AIS Membership Secretary
205 Catalonia Avenue / P.O. Box 177
DeLeon Springs, FL 32130
Phone and fax: 386-277-2057
E-mail: aismemsec@irises.org
\$25.00 single, \$30.00 dual.
See www.irises.org/

Check your AIS membership status: Need to know your membership expiration date? expiration date for club members or your Region's members for Affiliation? www.aislookup.org

Please pay your 2019 **SBMIS Membership Dues** ~ please give to Bonnie Petheram, or send checks made out to Sydney B. Mitchell Iris Society to Bonnie at 1226 High Street, Alameda, CA 94501. \$10 household.

Historic Iris Preservation Society (HIPS) dues can be mailed to HIPS Membership: Judy Eckhoff, 7911 South Yoder Road, Haven, KS 67543
E-mail: judye@msinter.net
For amounts, please see www.historiciris.org

Directions to the Garden Center:

666 Bellevue Avenue, Oakland

From the north or west: take Highway 580 or 24 to 980; take the West 27th Street/Grand Avenue exit, turn left on 27th Street, go east to Grand Avenue, watch for Lake Merritt on the right, take a left on to Grand Ave., then a right at the stoplight into the park. Proceed on Bellevue to the Garden Center. **From the south or east:** take the Lakeside (Lake Merritt) or Grand Ave. exit in Oakland; follow around the lake on the north and west side to Grand Ave. and Bellevue, turn left into the park.

Proceed to the Garden Center, park on either side of the road. We hope you can come -- everyone is welcome!

[On weekends only -- Expect to pay \$5.00 at the toll booth to park].

AC Transit Bus -- AC Transit bus #12 runs on Grand near the entrance to the park -- check transit before planning, as routes do change.

<http://tripplanner.transit.511.org>

By phone -- Dial 511 and say, "AC Transit," to speak with a person about route info

List of SBM Officers:

President	Jean Richter	(510) 864-7962	jeanrichter@berkeley.edu
Vice-President	Gesine Lohr	(510) 864-7962	Gesine.Lohr@gmail.com
Secretary	Shirley Trio	(209) 551-6323	shirleytrio@clearwire.net
Treasurer	Bonnie Petheram	(510) 864-7962	bpetheram@gmail.com
Directors-At-Large	Loretta Figueroa	(415) 233-1926	millvalleyfig@yahoo.com
<i>also Grand Poohbah</i>	Alan Robbins	(925) 939-1979	ADRafetywpc@earthlink.net
Newsletter	Gesine Lohr	(510) 864-7962	Gesine.Lohr@gmail.com
Door Prize Chair	Jean Richter	(510) 864-7962	jeanrichter@berkeley.edu
Hospitality	Shirley Trio	(209) 551-6323	shirleytrio@clearwire.net
Shows and Exhibits	Jean Richter	(510) 864-7962	jeanrichter@berkeley.edu
Program Chair	Gesine Lohr	(510) 864-7962	Gesine.Lohr@gmail.com
Library Chair	Gesine Lohr	(510) 864-7962	Gesine.Lohr@gmail.com
Publicity	**need a volunteer!		
Historian/scrapbooker	**need a volunteer!		
Immediate Past Pres.	Ray Vickers-Traft	(510) 277-4200	new# wndwsillorchids@aol.com
Once and Future President	Chuck Dekker		

Global warming is here—you know what to do
SBMIS Newsletter -- Gesine Lohr

1226 High Street, Alameda, CA 94501

below: Masked Man (Joseph Ghio, R. 2015) PCI

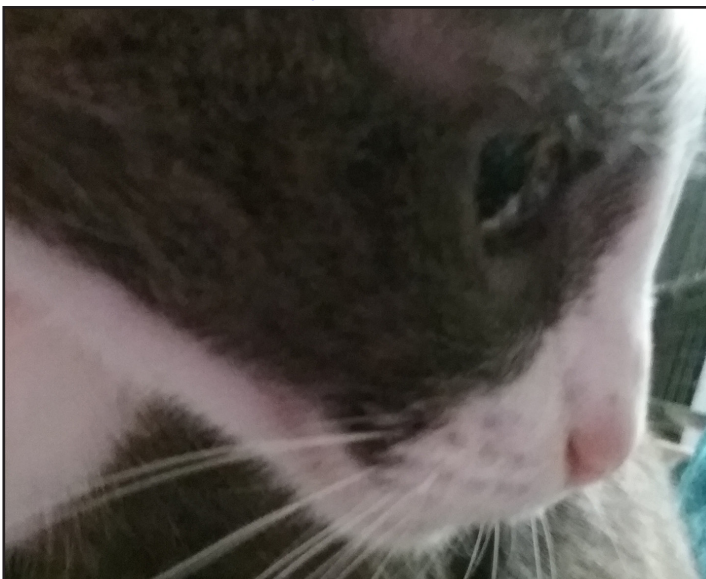
photo: Ken Walker

Also in silent auction: Canyon Snow, and 2 Bonus Points



If you see **old iris stuff which is about to be tossed**, please contact me (Gesine), so we can conserve these bits of history. I assure you, anything donated will be cherished. (510) 864-7962

www.facebook.com/#!/pages/Sydney-B-Mitchell-Iris-Society/116888028332187?ref=ts



above: Emma Sofia

photo: Gesine Lohr

A Sydney B Tradition!
We have members who for various reasons find it difficult or impossible to come to meetings. One of the issues is transportation. This could become a nice SBM tradition -- inviting, and arranging to bring, members to our meetings. Makes everyone happy!